

# Formas Worker



## ALTO DUO W660

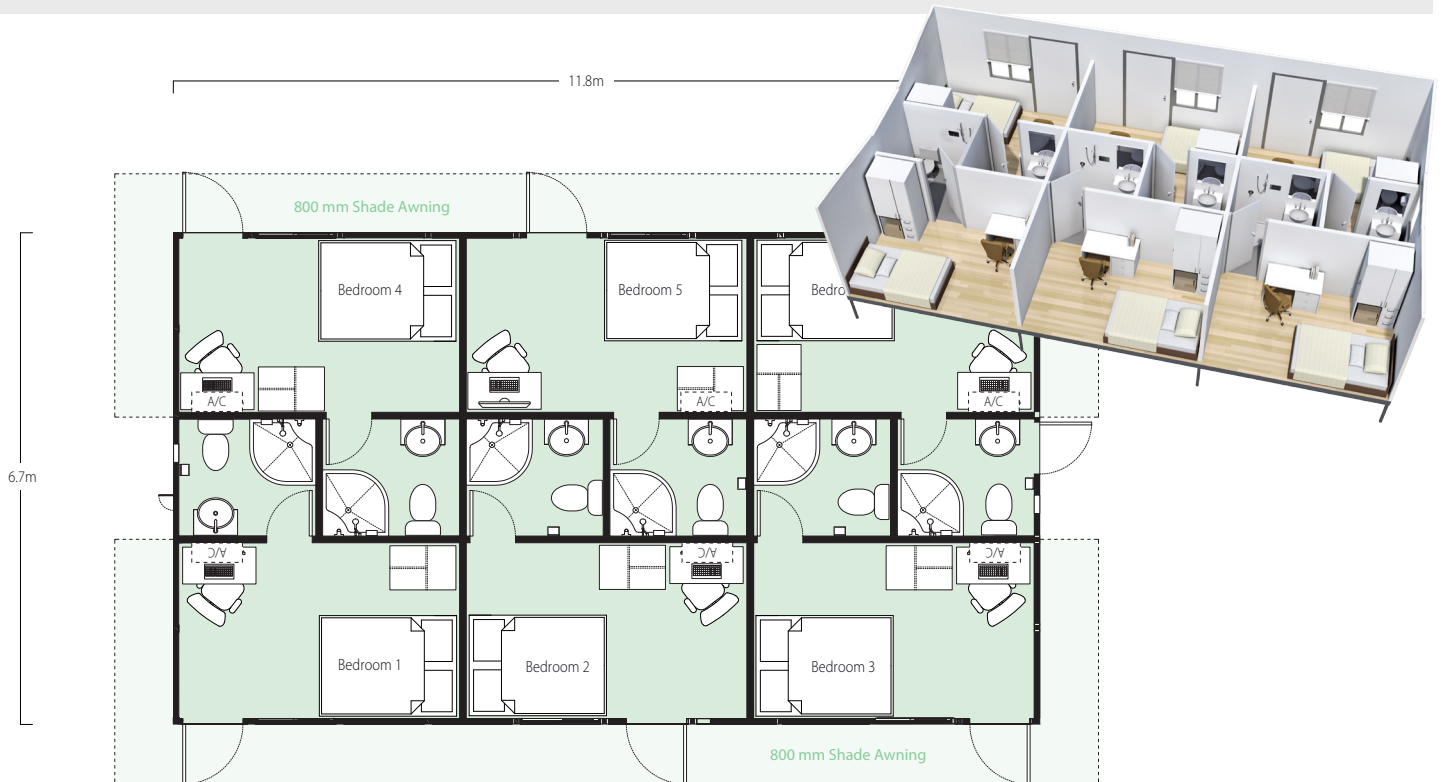
6 bedroom, 6 ensuite unit

Formas Homes are extraordinarily versatile and attractive houses that are designed to maintain perfect living conditions in the most remote locations.

### General Specifications

- Fully compliant with the Building Codes Australia (BCA)
- Cyclone rated steel structure, seam welded, sheet steel external wall and roof cladding and marine paint process finished
- Minimum 6 star energy efficiency rating (up to 8 star energy efficiency rating depending on location and orientation)
- Approximate weight – 18 tonnes
- Cyclone rated Mega Anchor footings
- Internal ceiling height – 2.4m raking up to 2.9m
- External and internal alloy insulated wall panel cladding, allowing for combination of glass or fixed panel options
- Laminated MDF to all insulated ceilings
- Wardrobe supplied per room
- All timber products rated EO
- Bamboo flooring on termite treated marine grade ply base on a structural steel sub-frame
- Service terminations are ready to receive external connections
- Thermal Barrier, double glazed aluminium window system
- Provision for 6 reverse cycle air conditioners (1 per room)
- Hard wiring for ceiling fans and/or additional lighting
- Choice of Colorbond Exterior colour option (Headland, Pale Eucalypt, Sandbank, Surfmist, Loft), subject to availability
- Acrylic moulded Magic Stone flooring in bathrooms
- Powder coated aluminium panel bathroom wall linings
- **Optional** - 800mm metal eave sunshade to perimeter for higher thermal efficiency rating

*Note specifications are subject to change without notice.*



Approx 80m<sup>2</sup> of Space