

Formas Home



ALTO DUO H221

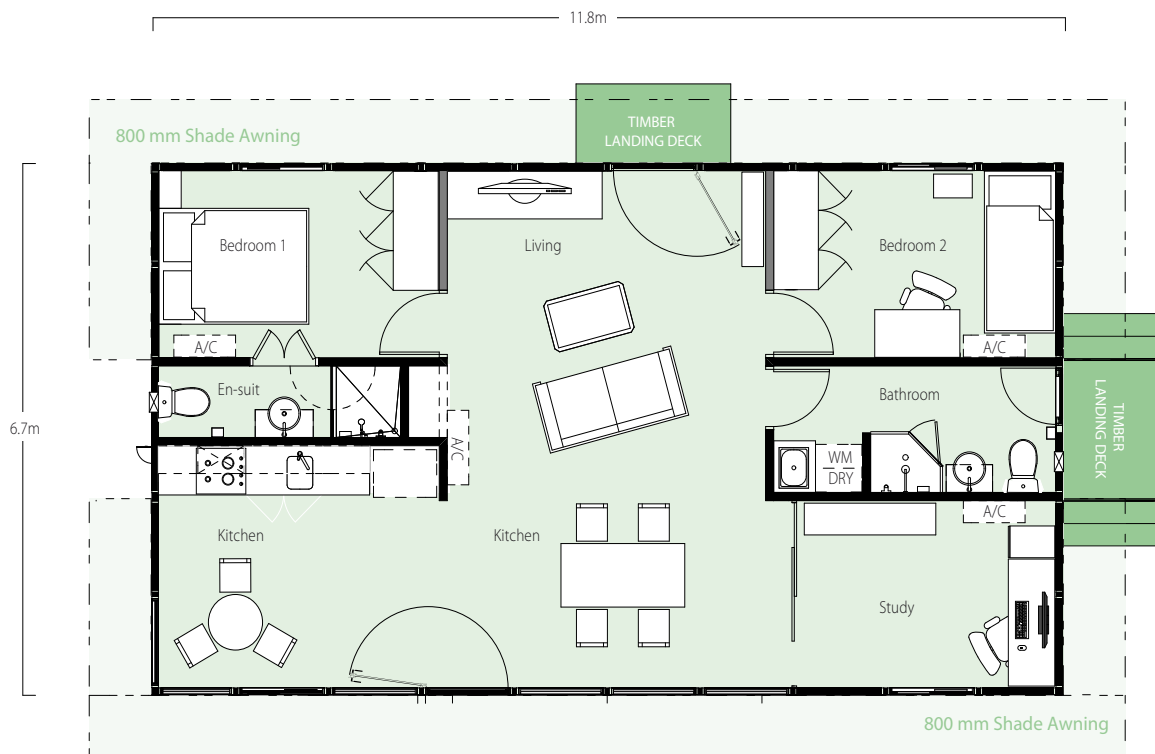
2 bedroom, 2 bathroom, 1 kitchen home

Formas Homes are extraordinarily versatile and attractive houses that are designed to maintain perfect living conditions in the most remote locations.

General Specifications

- Fully compliant with the Building Codes Australia (BCA)
- Cyclone rated steel structure, seam welded, sheet steel external wall and roof cladding and marine paint process finished
- Minimum 6 star energy efficiency rating (up to 8 star energy efficiency rating depending on location and orientation)
- Approximate weight – 18 tonnes
- Cyclone rated Mega Anchor footings
- Internal ceiling height – 2.4m raking up to 2.9m
- External and internal alloy insulated wall panel cladding, allowing for combination of glass or fixed panel options
- Laminated MDF to all insulated ceilings
- Acrylic moulded Magic Stone flooring in bathroom
- All timber products rated EO
- Bamboo flooring on termite treated marine grade ply base on a structural steel sub-frame
- Service terminations are ready to receive external connections
- Thermal Barrier, double glazed aluminium window system
- Provision for four split system reverse cycle air conditioners
- Powder coated aluminium panel bathroom wall linings
- Hard wiring for ceilings fans and/or additional lighting
- Choice of Colorbond Exterior colour option (Headland, Pale Eucalypt, Sandbank, Surfmist, Loft), subject to availability
- **Optional** - 800mm metal eave sunshade to perimeter for higher thermal efficiency rating

Note specifications are subject to change without notice.



Approx 80m² of Space